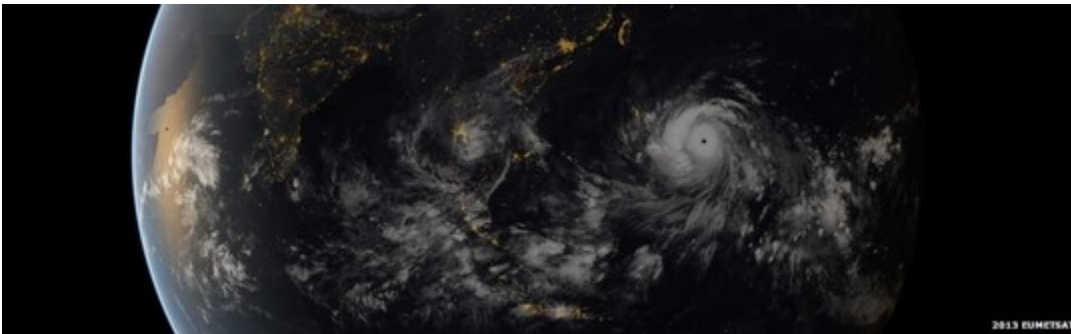




OWL News

Super Typhoon Haiyan - South East Asia

We're beginning to receive reports from the Philippines on the destruction and disruption caused by Super Typhoon Haiyan, possibly one of the strongest storms ever to make landfall - sustained winds have been reported at 199mph with gusts up to 235mph. By comparison, Katrina had sustained winds of 125mph when it made landfall.



Typhoon Haiyan is almost 600miles across and while the eye did not directly hit the capital Manila, the storm covered virtually all +7000 islands in the Philippine island chain.

We are checking with our OWL Network Partner in the Philippines and will be able to bring a more detailed overview of the local situation then but initial reports advise that virtually all manufacturing and production facilities were closed in preparation for the arrival of the storm. Domestic transportation, trucking etc., was also halted and severe flooding will keep many roads closed until the waters recede. Ports and airports have diverted traffic and cargo processing ceased. There will be delays affecting cargo coming out of the region.

The storm is now barreling it's way over the South China Sea towards Vietnam where the region is taking steps to prepare for its arrival. We are predicting port and airport closures, a manufacturing slowdown and delays to cargo movements.

We will proactively communicate with customers expecting shipments from the region but if you have a particular shipment you are concerned about then please don't hesitate to contact your local [Pacer International/Ocean World Lines office](#).